



STRONG. PROFESSIONAL. DESIGN.™
SPECIFICATIONS

Kitchen Basics™ Washerless Twin Handle Kitchen Faucets

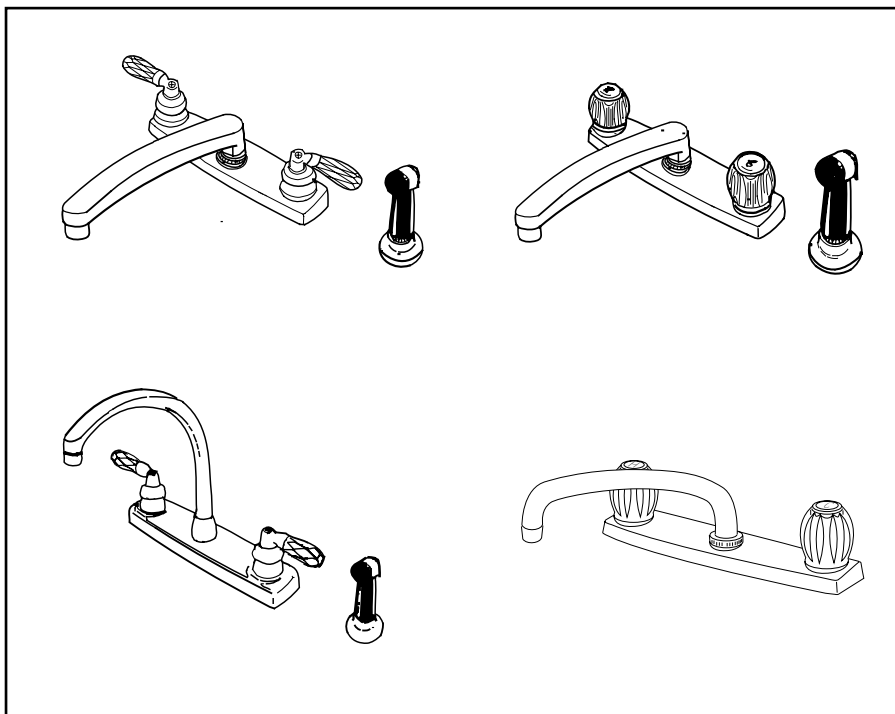
Models 8322Q, 8329, 8332Q, 8339, 8362,
8372, 8342, 8352, 8359, 83642,
83649, 83652, 83659

Standard Features

- Minimum working input water pressure20 psi
- Maximum operating input water pressure80 psi
- Maximum pressure125 psi
- Maximum flow rate ..2.2 gpm at 60 psi (see chart)
- Valve type.....washerless valving
- Installation requirements.....3 or 4 sink holes
- Supply Connectors Non-metallic shanks

Standards and Ratings

- ASME A112.18.1M American Society of Mechanical Engineers Standard: "Plumbing Fixtures Fittings"
- ANSI 117.1 American National Standards Institute: "American National Standards Specifications for making buildings and facilities accessible to and usable by physically handicapped people." (Lever Handles Only)
- ADA "Americans with Disabilities Act" - Non-discrimination on basis of Disability by Public Accommodations and in Commercial facilities; Final Rule dated 7/26/91 28 CFR Part 36 (Lever Handles Only)



Features

- Chrome plated finish**
- Choice of acrylic or lever handles**
- Washerless valves**
- Choice of spout styles**

Benefits

- Durable and easy to clean.
- Easy operation and unique style coordinates with traditional or contemporary decor.
- Proven drip-free performance.
- Non-metallic, brass or decorative hi-rise.

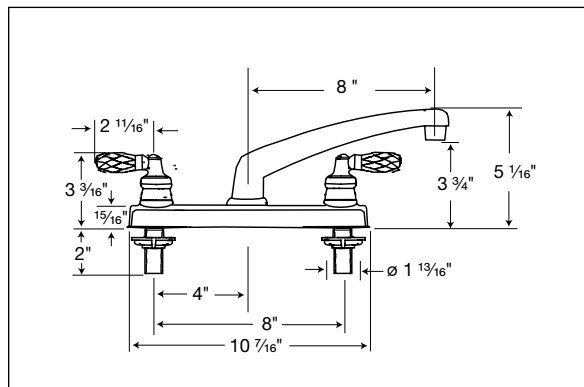
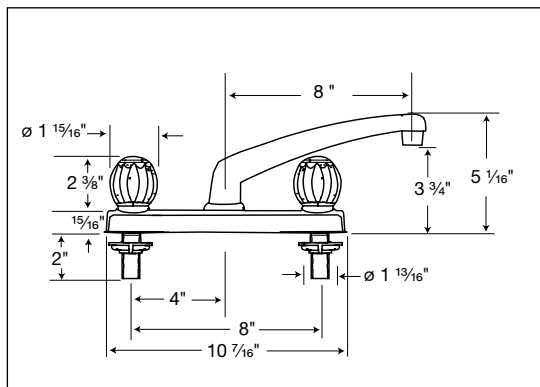
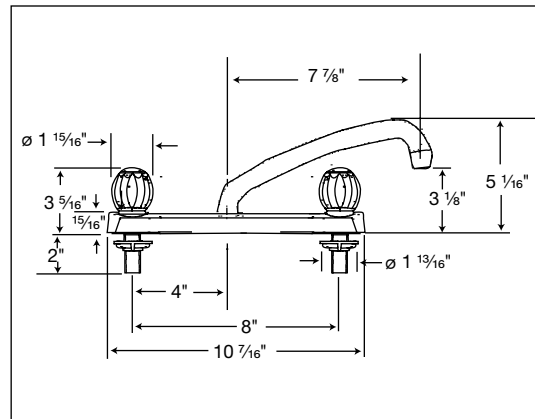
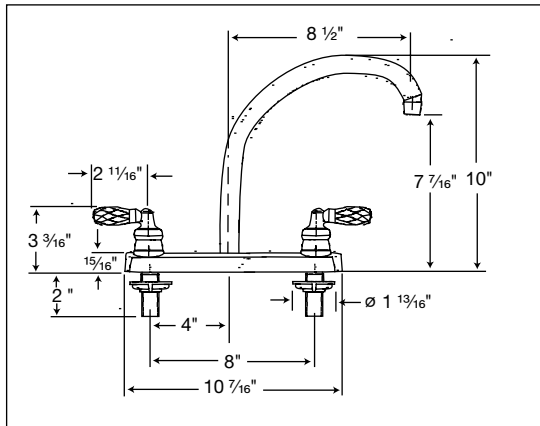
Optional Features

- | | | |
|--|-------------------------------------|---|
| <input type="checkbox"/> Round Acrylic Handles | <input type="checkbox"/> With Spray | <input type="checkbox"/> Non-Metallic Spout |
| <input type="checkbox"/> Acrylic Lever Handles | <input type="checkbox"/> Less Spray | <input type="checkbox"/> Tubular Spout |
| | | <input type="checkbox"/> Hi-rise Spout |

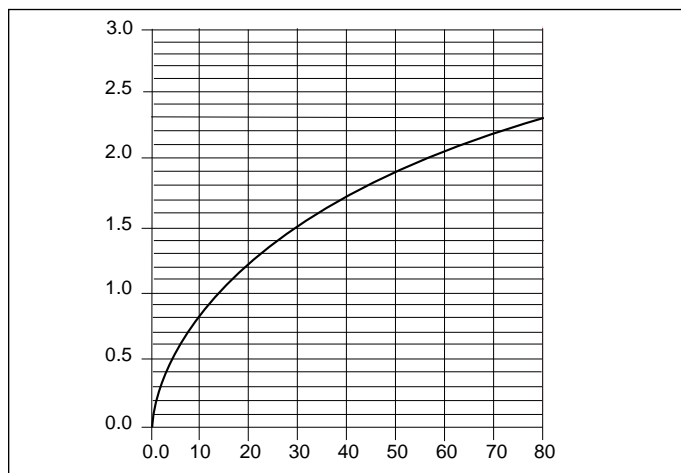
Kitchen Basics™ Washerless Twin Handle Kitchen Faucets

D I M E N S I O N S

Models 8322Q, 8329, 8332Q, 8339, 8362,
8372, 8342, 8352, 8359, 83642,
83649, 83652, 83659



FLOWRATE (gpm)



LINE PRESSURE P.S.I. GAUGE



STRONG. PROFESSIONAL. DESIGN.™